

Mokuhanga Goes International

The Mokuhanga Programs of Keiko Kadota

by April Vollmer



Nagasawa Art Park, Mi-Lab, International Mokuhanga Conferences and Other Programs



55 Mercer Gallery: Out of Nagasaki 2003





2004 Nagasawa Art Park



Robert Kushner
White Flower
2004
1/1



Robert Kushner
Red Flowers
2004
1/1

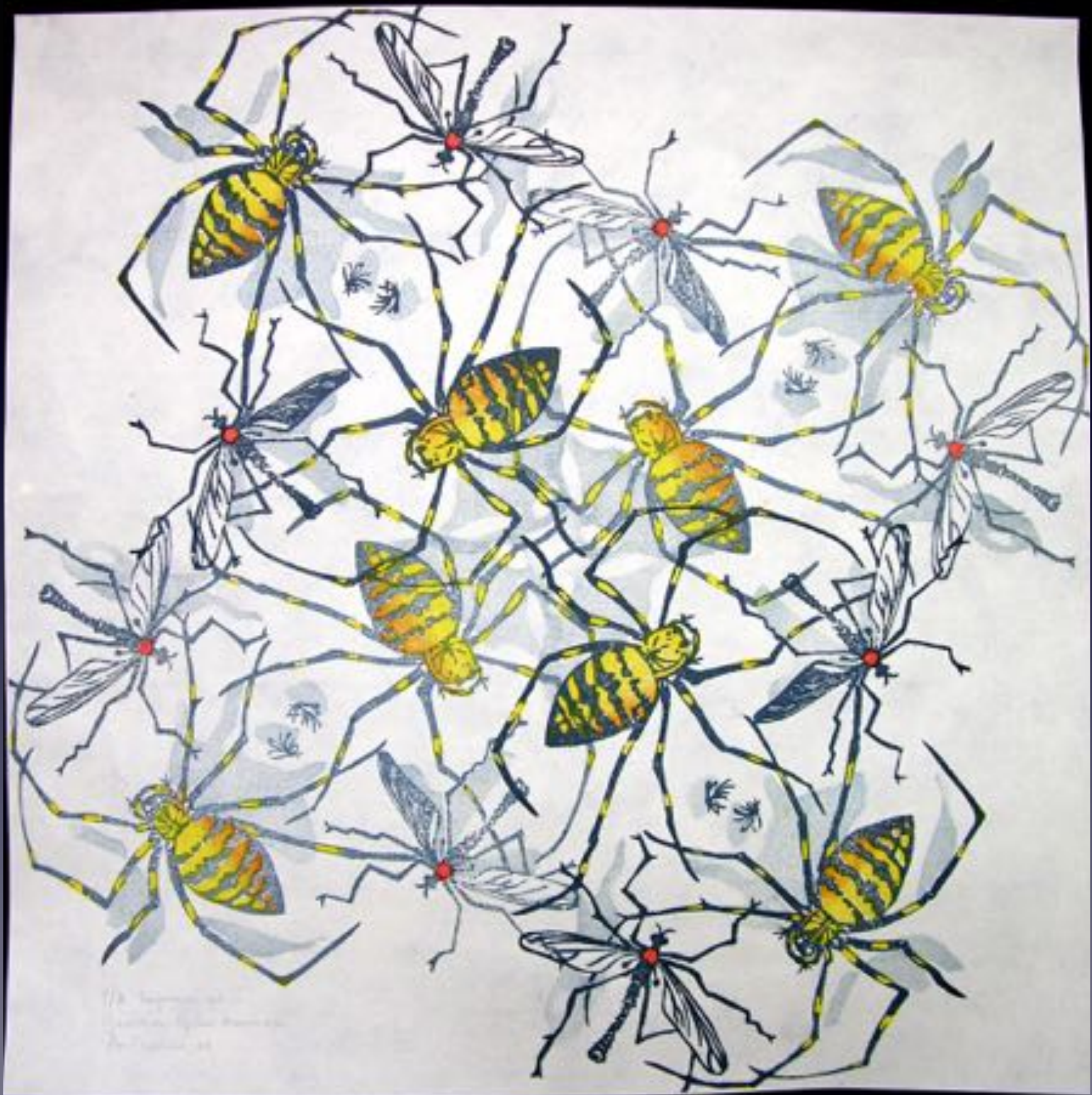
Keiko Kadota in 2004 with Robert Kushner Prints











178. Spiders of
the genus *Argiope*
from Florida, U.S.



2005 IMPACT Printmaking Conference Berlin-Poznan













2019年11月
 第11卷第11期
 第11卷第11期
 第11卷第11期

[illegible]



IMC 2011
The opening banquet at the Karasuma Hotel

ROOM

1

第一会議室

9:30-11:30

Keizo Sato 佐藤景三 (京都)

Printing demonstration: Adapting Traditional Japanese
Woodblock Printing Techniques to Contemporary Art Works
職人の技ー伝統木版から現代木版への応用

10:00-11:30

Hiroshi Fujisawa 藤澤洋 (京都)

10:00-10:40 Carving demonstration
浮世絵木版画の彫の実演

10:45-11:30 Presentation on Mokuhanga and Buddhism
プレゼンテーション: 信心と木版画について

13:30-15:00

Hidehiko Goto 後藤英彦 (神奈川)

Making of Traditional Hon-Baren
本ばれん作り

14:00-16:00

Kenji Takenaka & Yuko Harada

竹中健司 & 原田裕子 (京都)

Kyoto Prints and Their Production
京版画の制作技法紹介

15:30-16:30

Hidehiko Goto 後藤英彦 (神奈川)

Wrapping of Hon-Baren
ばれんの包み





Mokuhanga Innovative at Art Forum Jarfo, Kyoto



Board Member Exhibition
 Honorary Board: Akira KUROSAKI, Tetsuya NODA

Kari LAITINEN, Karen KUNC, April VOLLMER, Seiichiro MIIDA, Tuula MOILANEN





Mokuhanga and HyoguPrints
from Nagasawa Art Park printmaking program

June 5-June 12, 2011
at Kyoto Art Center
(Tatami room 2F)
Organized:
Nagasawa Art Park Committee







Hiroshi Fujisawa
Carving Demonstration







TUULA MOILANEN

Printmaker and book artist Tuula Moilanen was born in Finland 1959. She is a member of The Finnish Printmakers Association and The International Ukiyo-e Society, Japan. After finishing her art studies in Finland 1989, she became a research student in Japanese traditional woodblock printmaking and papermaking at Kyoto Seika University (Japan). Tuula has been living in Kyoto, Japan since then.

Tuula uses traditional Japanese printing techniques and Japanese handmade washi-paper in her woodblock prints. Her works are based on old stories, myths and mysteries of various origins. Another source of her inspiration is the Nature, starting from the microcosmos to the vastness of space. From 2008 she has been fascinated by the beauty of old Japanese Ukiyo-e prints, and I currently produces "mitate" -prints, which lean on their themes and composition.

Tuula has held several solo and group exhibitions in Finland since 1980 and in Japan since 1990. She has also participated in group exhibitions in Europe, USA and Canada. She is also a book artist and an active writer, who has published books and articles about Japanese art and culture since 1995. Among her writings is the chapter of the Japanese woodblock printing in *The Art and Craft of Woodblock Printmaking* (UIAH 1999). Her latest research concerning the concept of Time and Eternity in Japanese woodblock prints will be published in Finland in 2012.

www.tuulamoilanen.net



Mokuhanga Connexions
OPEN PORTFOLIO
EXHIBITION











A group of approximately ten women are posing for a group photograph in a modern, brightly lit interior space, likely a conference center. They are dressed in a variety of styles, including patterned dresses, a blue floral top, a black dress with a purple scarf, and a dark patterned dress. The background shows other people and architectural details like stairs and large windows.

第一回 国際木版画会議

INTERNATIONAL
MOKUHANGA
CONFERENCE 2011

June 10 - 11, 2011

Awaji Yumebutai International Conference Center
AWAJI ISLAND, JAPAN





IMC2014 Tokyo Board



International Mokuhanga Conference 2011
第1回国際木版画会議

2011年6月4日(土) - 6月10日(木)
京都府立総合文化センター 大ホール
〒605-0855 京都府京都市下京区大宮

実行委員会
・ 会長 佐々木 信
・ 幹事 佐々木 信
・ 幹事 佐々木 信
・ 幹事 佐々木 信
・ 幹事 佐々木 信

スポンサー
2011年6月4日(土) - 6月10日(木)
京都府立総合文化センター 大ホール
〒605-0855 京都府京都市下京区大宮

協賛
2011年6月4日(土) - 6月10日(木)
京都府立総合文化センター 大ホール
〒605-0855 京都府京都市下京区大宮

協賛
2011年6月4日(土) - 6月10日(木)
京都府立総合文化センター 大ホール
〒605-0855 京都府京都市下京区大宮



The Dundee IMPACT Conference, 2013





2013 Dundee Planning meeting for IMC2014

2013 Mi-Lab Research Residency



Mi-Lab Residency 2013



IMC2014 Tokyo



Opening Banquet IMC2014 at Tokyo Geidai





IMC2014 Open Portfolio Tokyo Gedai





IMC2014

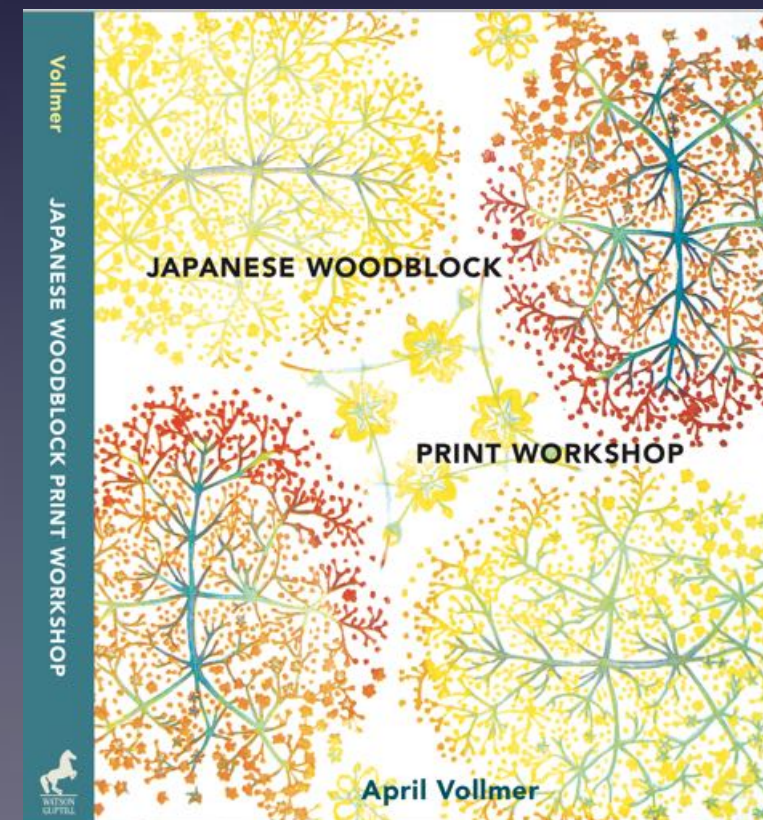
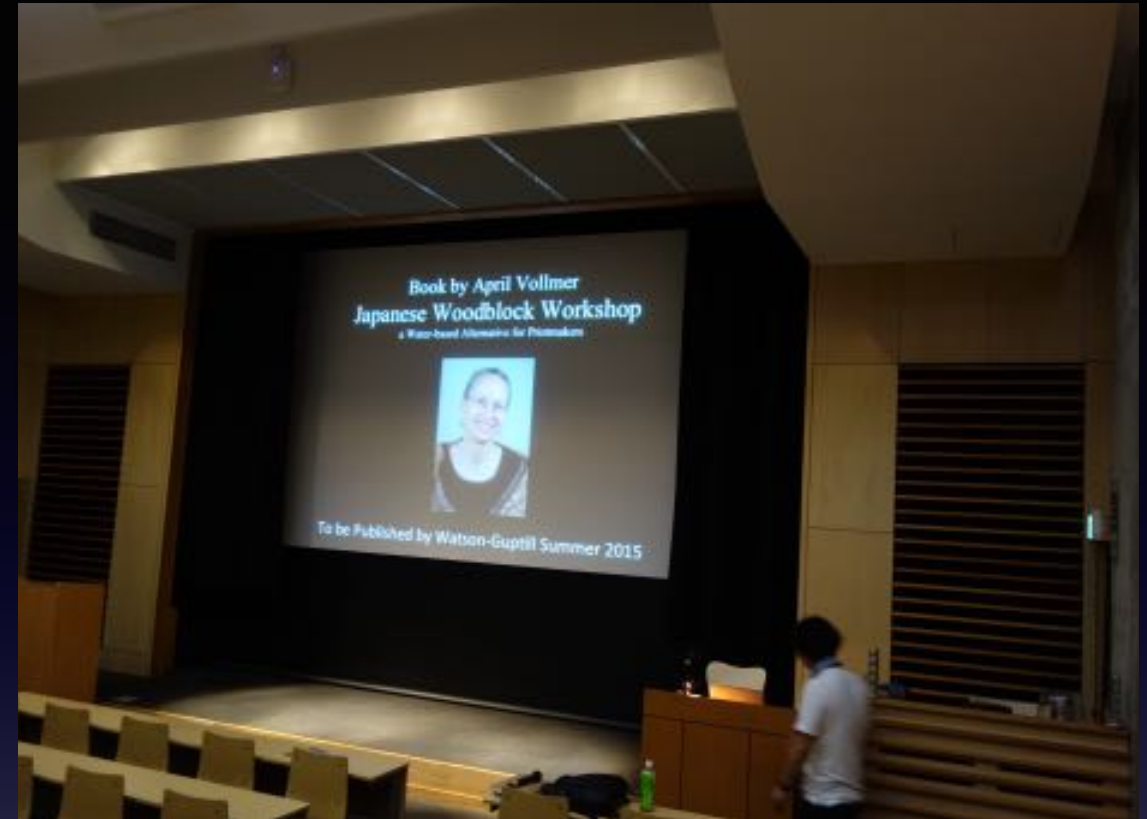
















Awards at IMC2014



Nagasawa Art Park Reunion at IMC2014 Tokyo

IMC Planning Board Meeting 2014





Shoichi Kitamura
Sharpening Demonstration
2014

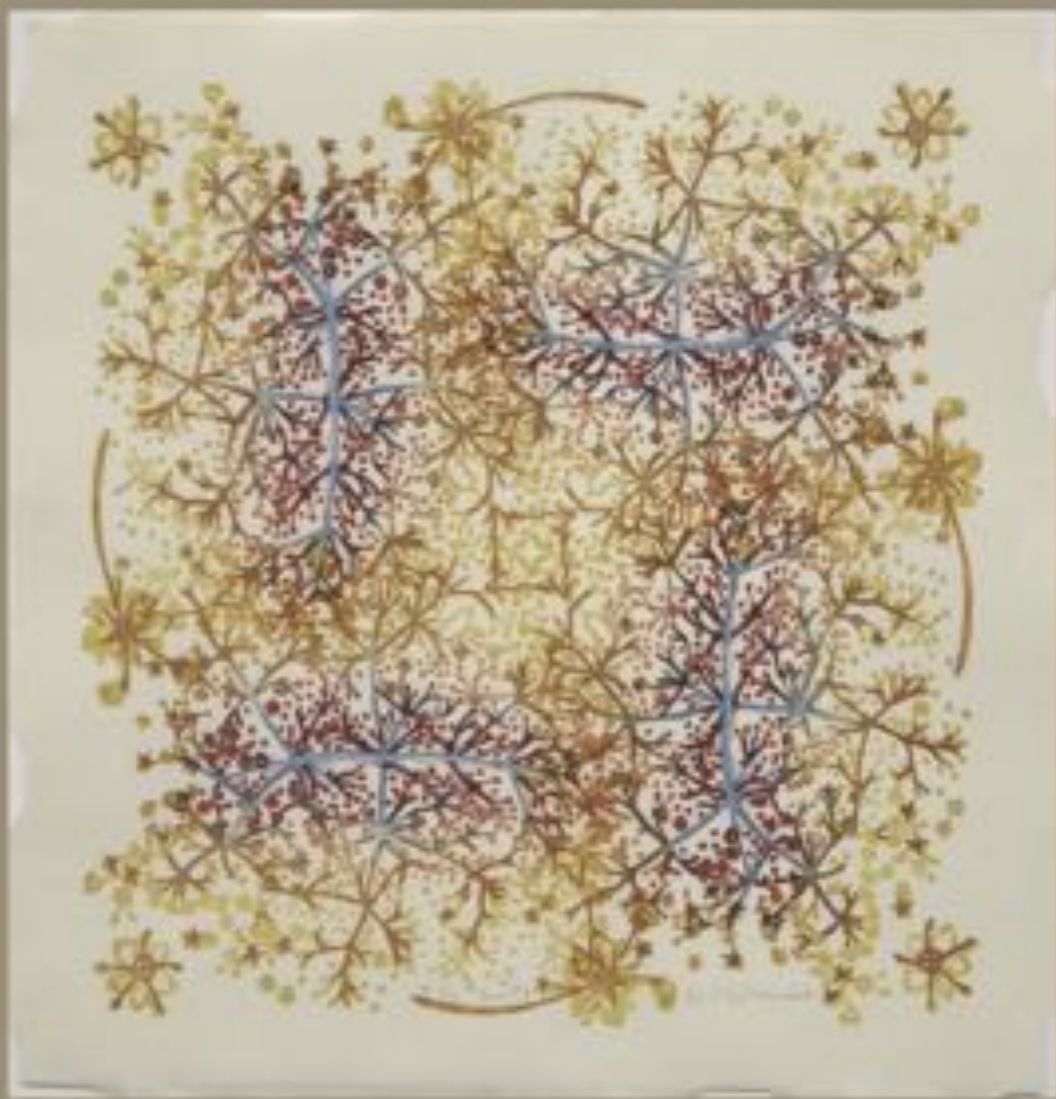




Ogawa Papermaking 2014



Mi-Lab program 2014



エーイプリル ボルマー 展

Narrative patterns

2015年10月3日(金) - 2015年10月18日(日)

12:00-18:00 (月、火曜日休廊 最終日は5時まで)



2015 Exhibition and Book Talk CfSHE Gallery Tokyo







Book Talk at Library 2015

