

An aerial photograph of a city skyline, likely San Francisco, viewed from the water. The city's buildings are clustered on a peninsula, with a prominent tall, thin skyscraper. The surrounding water is dark blue, and several boats are visible, including a large orange and white tugboat in the lower right. The text is overlaid on the right side of the image.

Mokuhanga in Today's Art Marketplace

Issues Explored by an
Artist, Curator & Non-Profit Gallerist

Florence Neal











Art on Paper Fair, Pier 36, New York, 2016

An aerial photograph of a city, likely Honolulu, with a dense urban landscape in the foreground and a range of mountains in the background under a hazy sky. The text is overlaid on the right side of the image.

Mokuhanga in Today's Art Marketplace

Explored by an Artist

Florence Neal



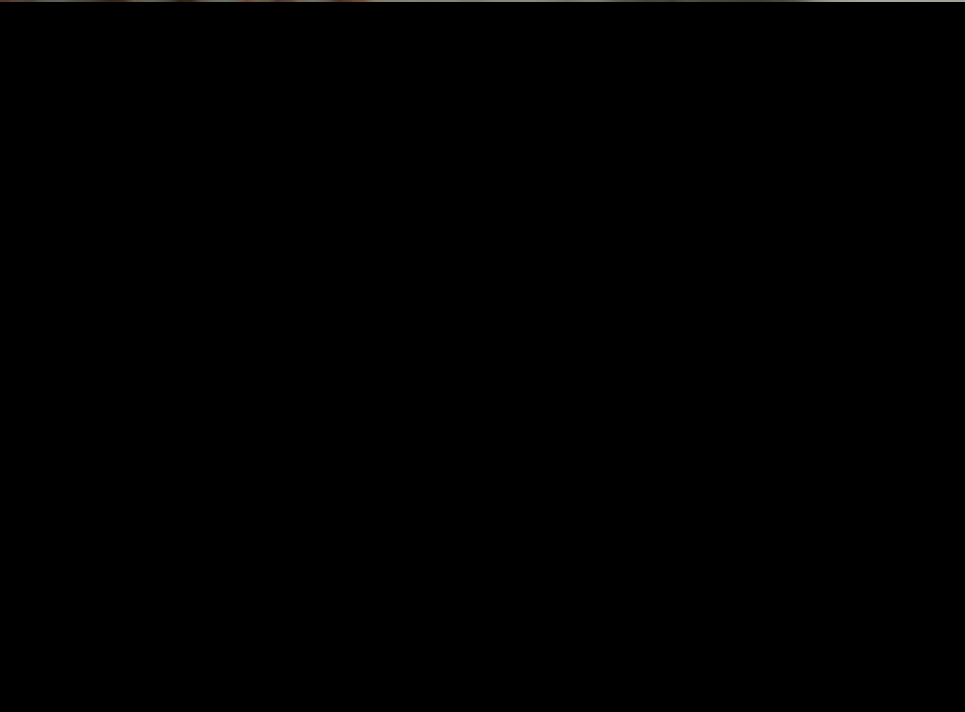
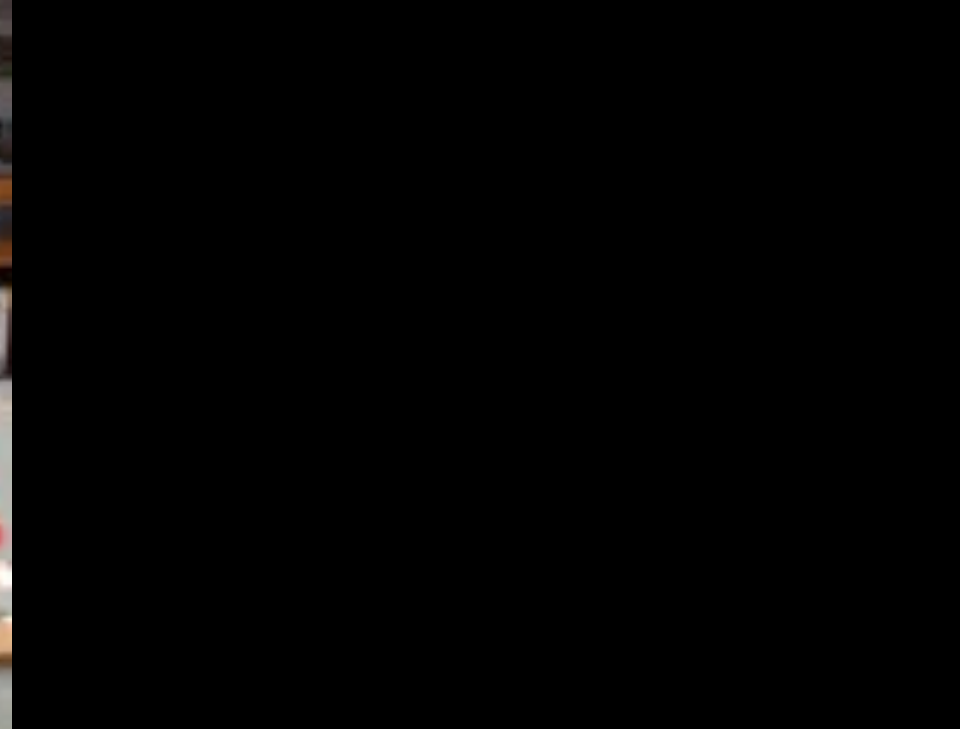




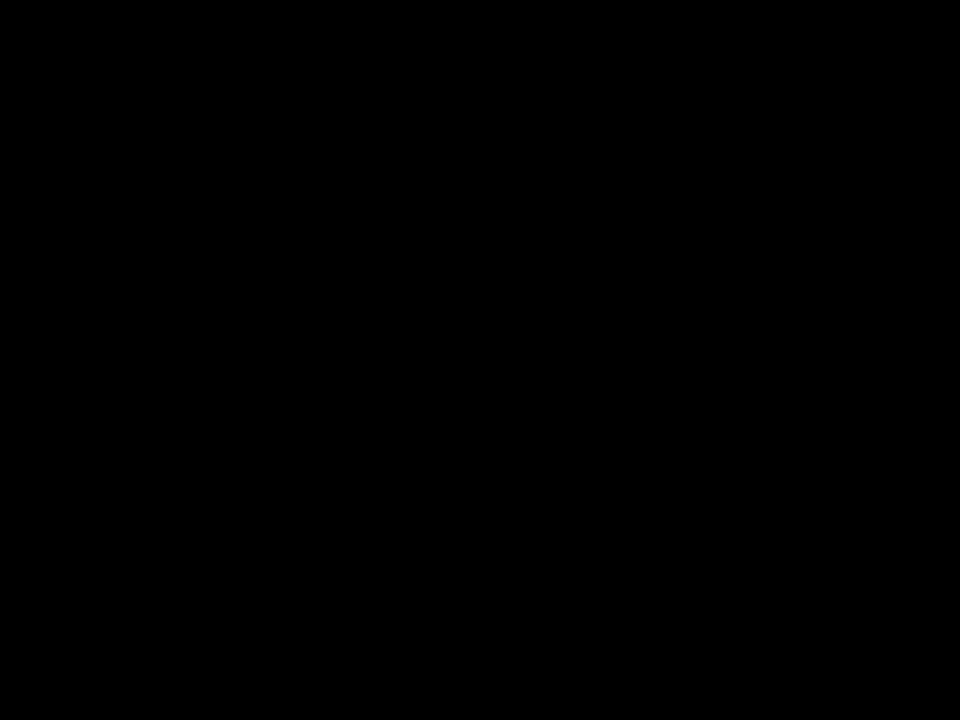


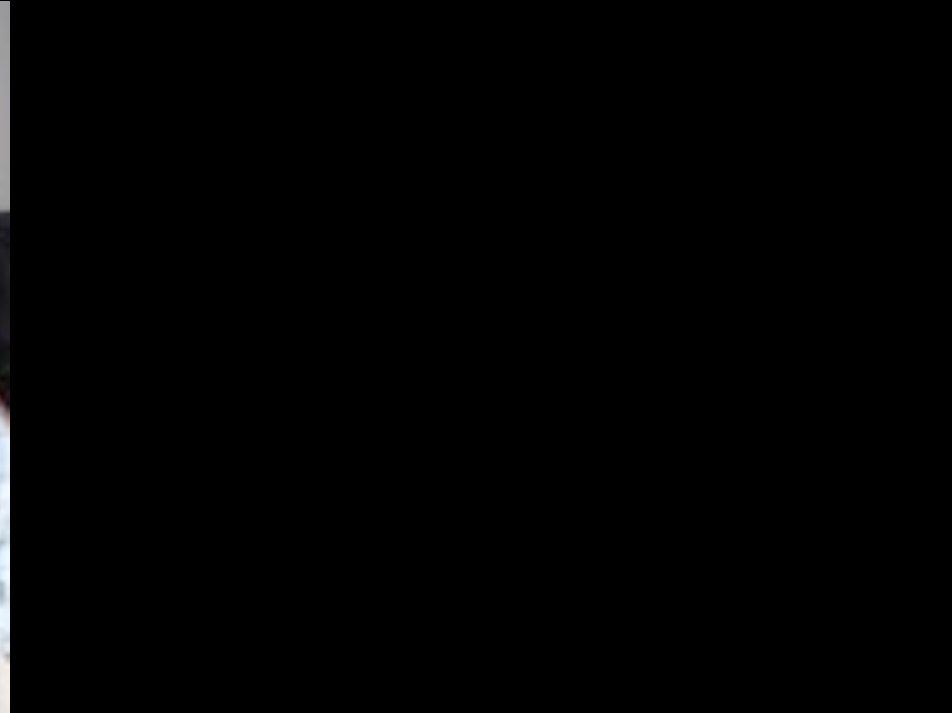
















Hiroshi Fijisawa, Professional Ukiyo-e carver, Kyoto



Hiroshi Fijisawa, Professional Ukiyo-e carver, Kyoto





Hiroshi Fijisawa, Professional Ukiyo-e carver, Kyoto



Makoto Nakayama, Master Printer, Kyoto



Hiroshi Fijisawa, Professional Ukiyo-e carver, Kyoto



Hidehiko Goto



Makoto Nakayama, Master Printer, Kyoto



Kashu Yabuta , Workshops Making Japanese Byobu and Paper Hinges











Florence Neal, *Naruto Whirlpools*, Mokuhanga, 6 x 9.5", 2011



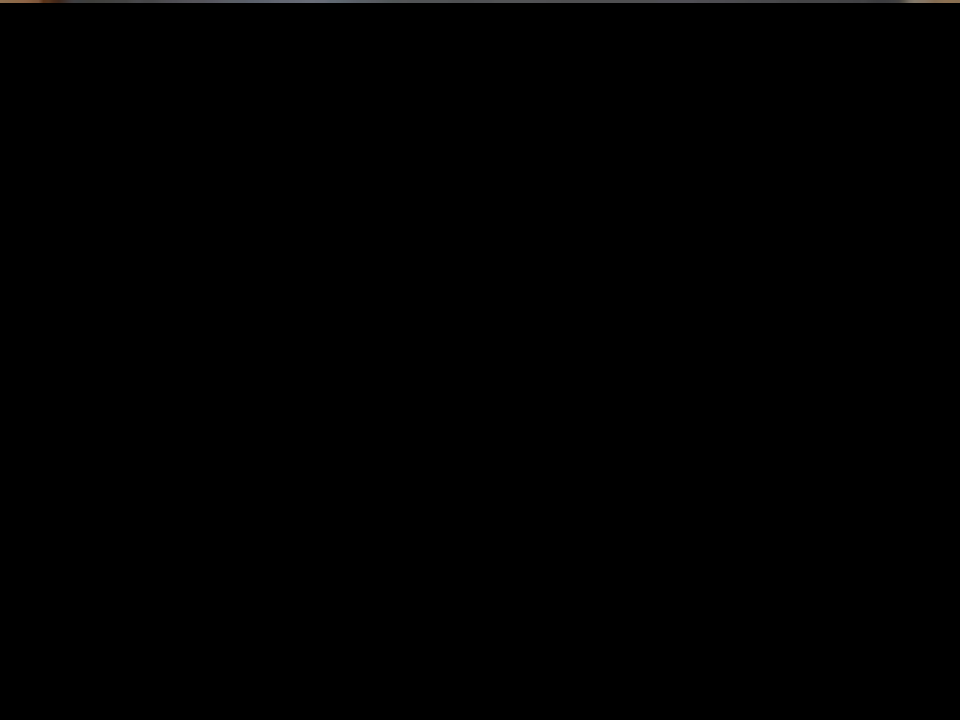
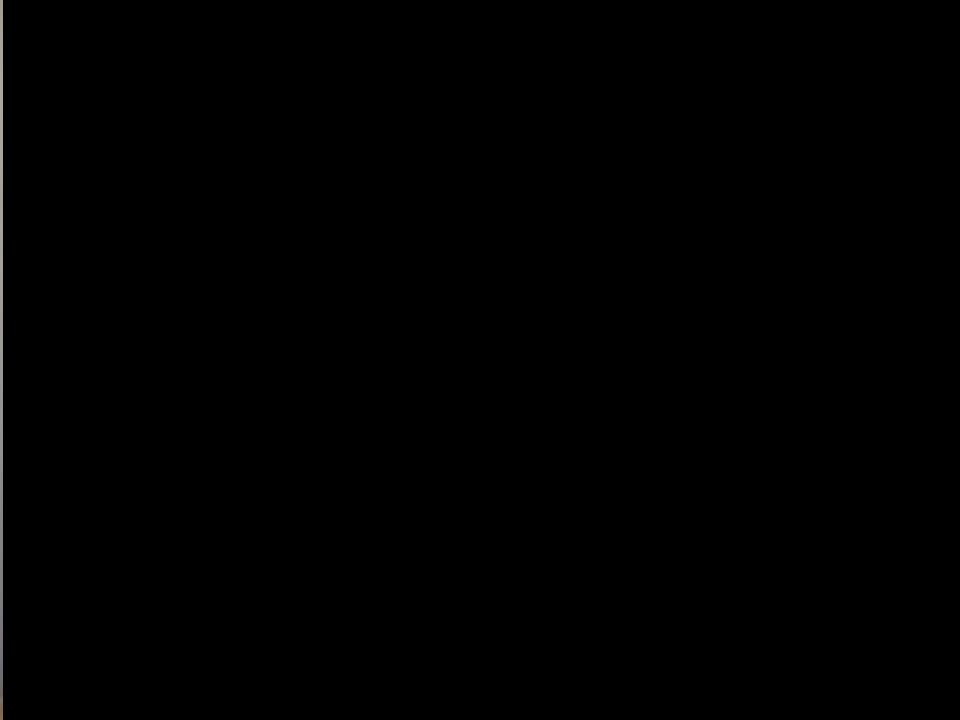




Florence Neal, *The Conversation at Mt. Fuji*, Mokuhanga, 10 x 7", 2013











An aerial photograph of a city harbor, likely San Francisco, showing a large ship docked at a pier. The city skyline is visible in the background, with a prominent bridge and a large body of water in the foreground.

Mokuhanga in Today's Art Marketplace

Explored by a Curator

Florence Neal



NEW YORK

CURATOR
Florence Neel

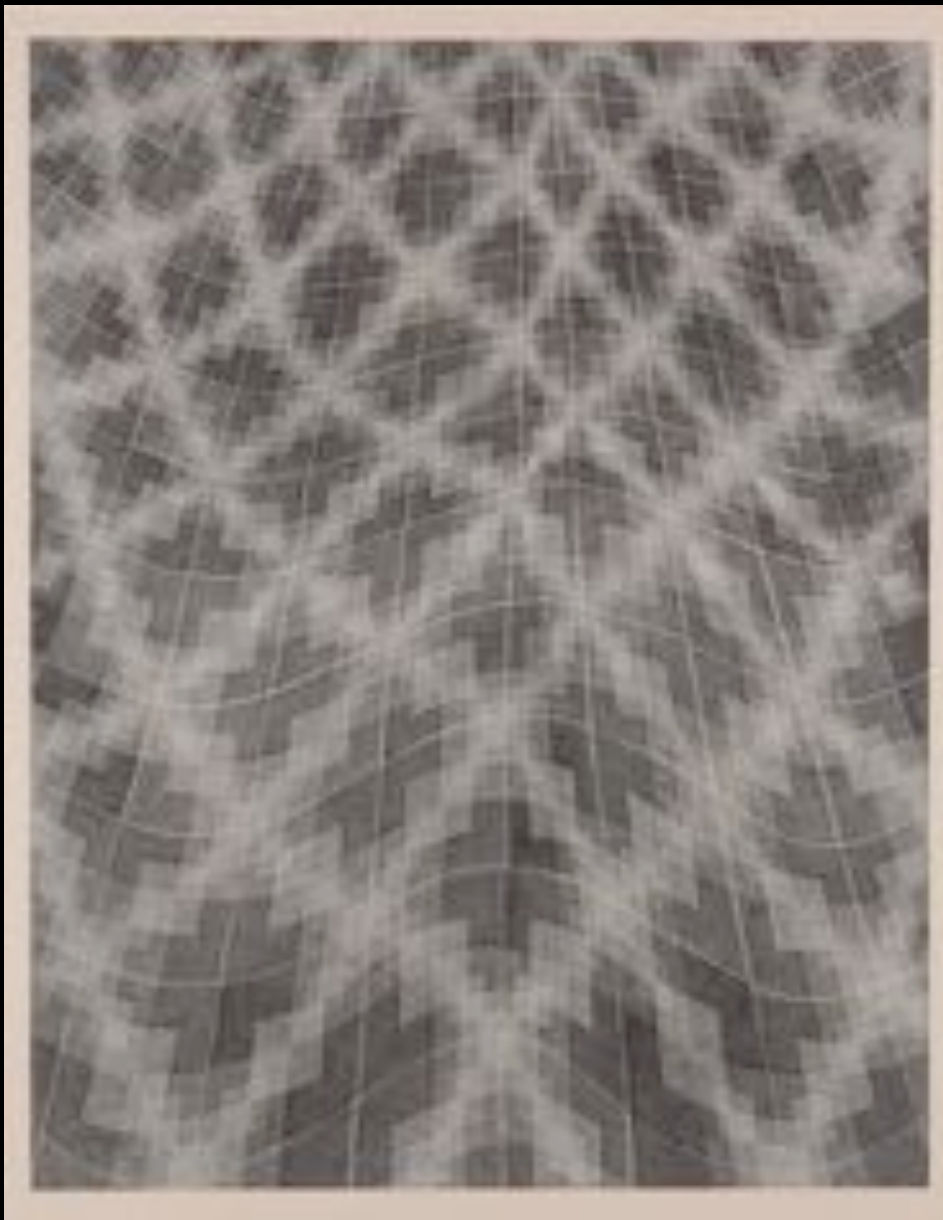
ARTISTS
Takuji Hamanaka
Ursula Schneider
Yasu Shibata
April Vollmer

November 7
– December 14, 2016

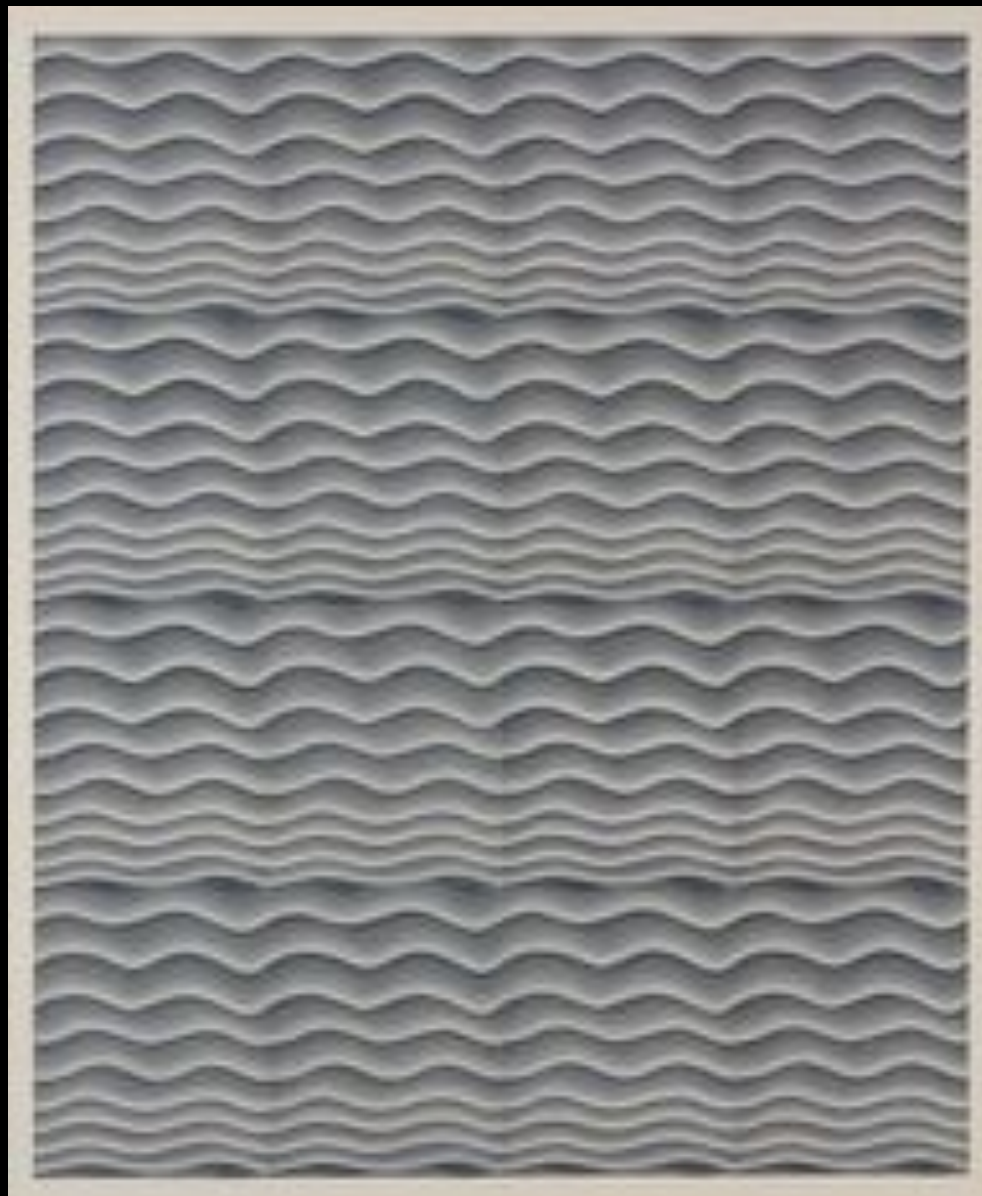
MOKUHANGA



NY Mokuhanga: Takuji Hamanaka, April Vollmer, Yasu Shibata and Ursula Schneider



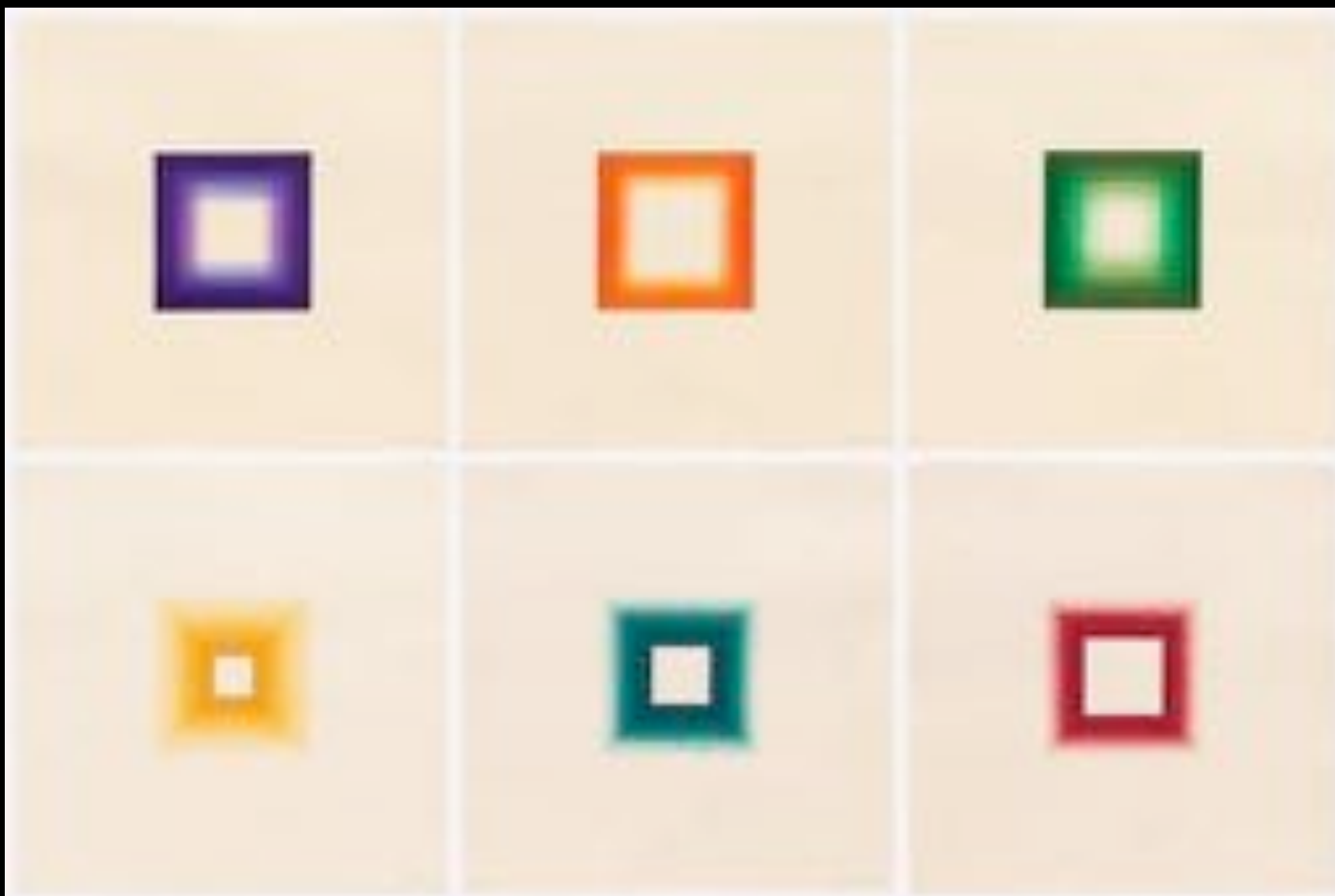
Takuji Hamanaka, *Simmering*, Mokuhanga gampi collage, 28" x 22", 2010



Takuji Hamanaka, *Repeat After Me – Gray*, Mokuhanga collage, 28" x 22", 2011



Yasu Shibata, *Color Chart 4*, Mokuhanga, 11 x 8.5" each, 2011



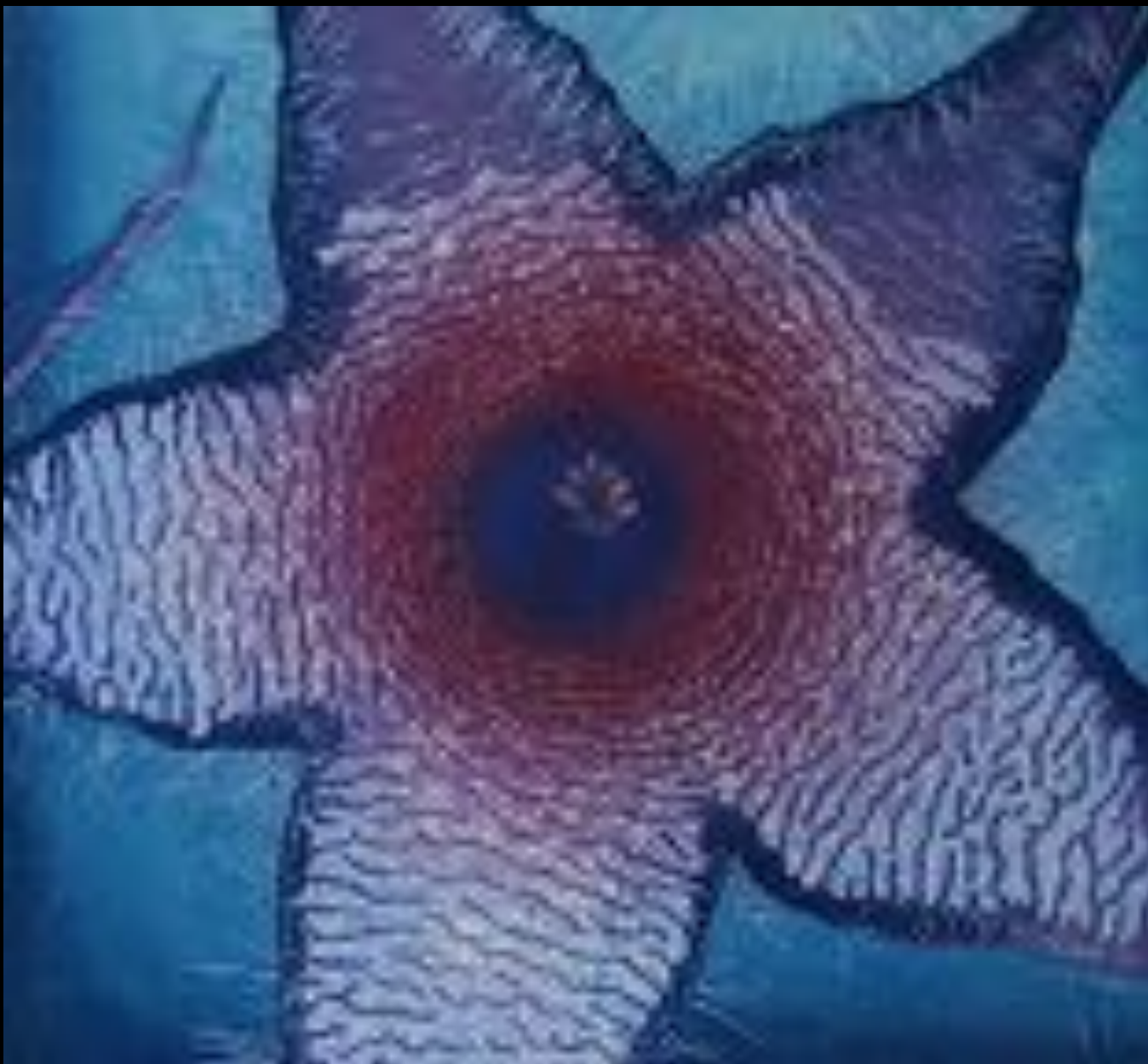
Yasu Shibata, *Six White Squares*, Mokuhanga, 11 x 11" each, 2014



Ursula Schneider, *Channing Landscape*, ed. 9/30, 13" x 38", 1996



Ursula Schneider, *Icelandscape*, mokuhanganga, ed. 17/50, 5" x 22", 1993



April Vollmer, *Attractor*, mokuhanga, ed. 12/25, 17.5" x 16.5", 2006



April Vollmer, *Delirious Birds and Bees*, mokuhanga, ed. 2/16, 26" x 26", 2007







April Vollmer and Japanese singer/songwriter Morio Agata in front of prints by Takuji Hamanaka













An aerial photograph of a coastal city, likely Honolulu, showing a dense urban grid in the foreground, a large body of water (Waikiki Bay) in the middle ground, and a hilly coastline with a beach in the background under a dramatic, cloudy sky.

Mokuhanga in Today's Art Marketplace

Explored by a Non-Profit Gallerist

Florence Neal



KENTLER PROGRAMS

EXHIBITIONS & EVENTS

Exhibitions of contemporary drawings and works on paper by local, national and international artists.

KENTLER FLATFILES

Drawings and works on paper by more than 200 artists.
Available for viewing by appointment.

Curatorial resource:
The Post Hook Archives

K.I.D.S. ART EDUCATION

- In-School Programs
- After School Programs
- Weekend Family Programs

K.I.D.S. Map

Kentler International Drawing Space, founded by two artists in 1986, is a 501(c)(3) nonprofit organization dedicated to bringing contemporary drawings and works on paper by emerging and under-represented national and international artists to the public, and to providing the opportunity to examine, interpret and expand the definition of art in society.





Laura Phipps, Senior Curatorial Assistant, Whitney Museum of American Art











Focus on the Flatfiles in the front gallery space



Katsutoshi Yuasa, *Whereof One Cannot Speak, Thereof One Must be Silent*, woodcut, 26" x 20", 2014



Karen Helga Maurstig, *Winter Morning*, mokuhanga, ed. 2/25, 19.5" x 14", 2010









April Vollmer gave a mokuhanga demonstration at Kentler with Jennifer Mack Watkins.



Gallery visit by professors and students from Aichi University, Japan

RECEPTION

Exhibition

The artist's recent work is a continuation of his earlier work in painting, but with a new focus on the human condition and the social issues of the day.

- 1. It was a very successful exhibition.
- 2. The artist's work is very powerful.
- 3. The artist's work is very powerful.

During the reception, the artist was asked to give a short speech. He spoke about his work and the importance of art in society.

Exhibition

The artist's exhibition was a great success. It was a very powerful statement about the human condition and the social issues of the day. The artist's work is very powerful and it was a great success.

The artist's work is very powerful and it was a great success. It was a very powerful statement about the human condition and the social issues of the day. The artist's work is very powerful and it was a great success.

It was a very successful exhibition.

The artist's exhibition was a great success. It was a very powerful statement about the human condition and the social issues of the day. The artist's work is very powerful and it was a great success.



