

PAUL BINNIE

TWENTY-FIVE YEARS IN
WOODBLOCK PRINT

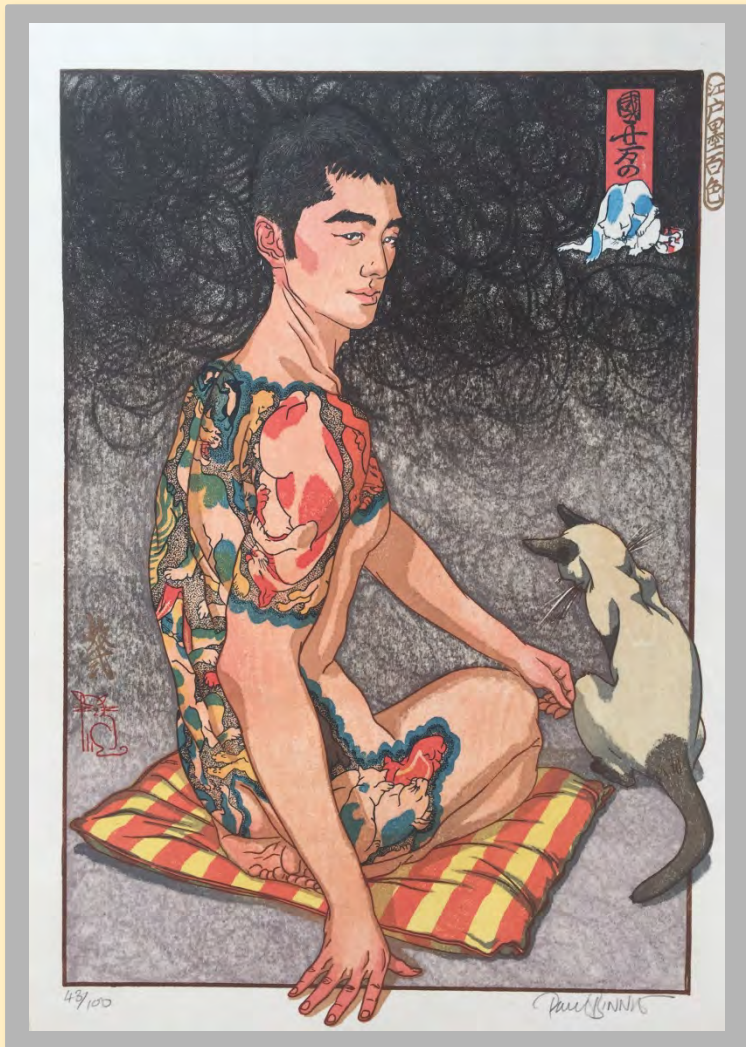
TIMELINE

- EDINBURGH UNIVERSITY
AND COLLEGE OF ART
(1985 – 1990)
- PARIS (1990 – 1992)
- TOKYO (1992 – 1999)
- LONDON
(1999 – PRESENT)

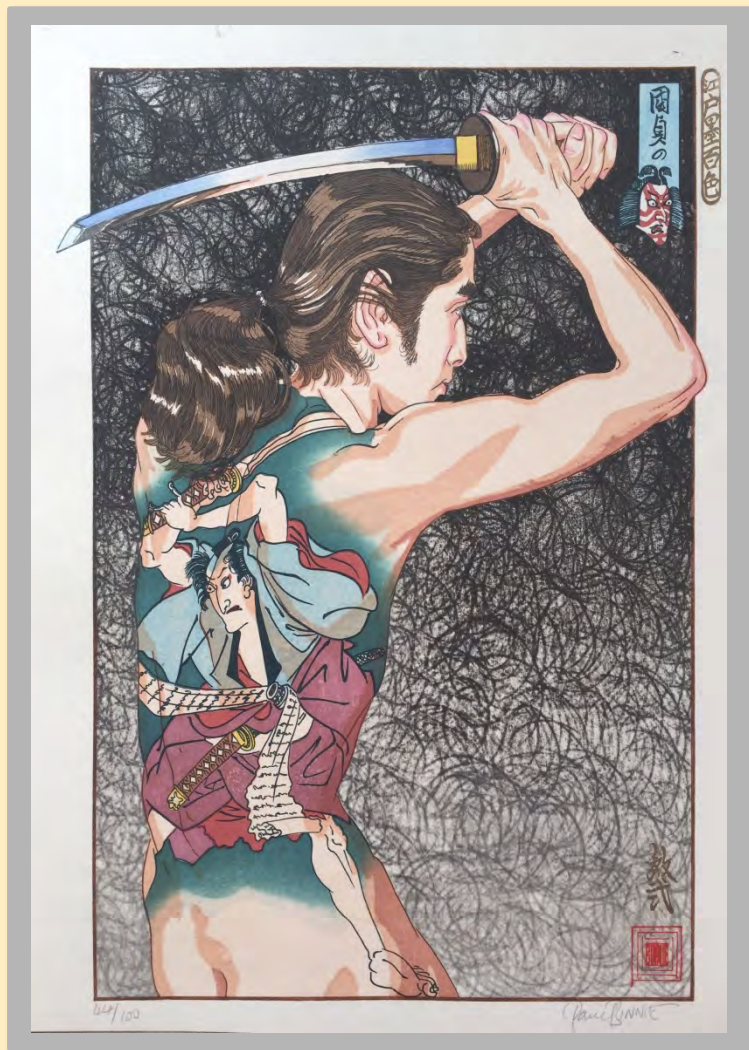


TATTOOS

(FROM 1992)



EDO-ZUMI HYAKU SHOKU



EDO-ZUMI HYAKU SHOKU



KABUKI-ZA THEATER

(1993 – 1998)



OKUBI-E SERIES



HEISEI YAKUSHA Ō-KAGAMI SERIES

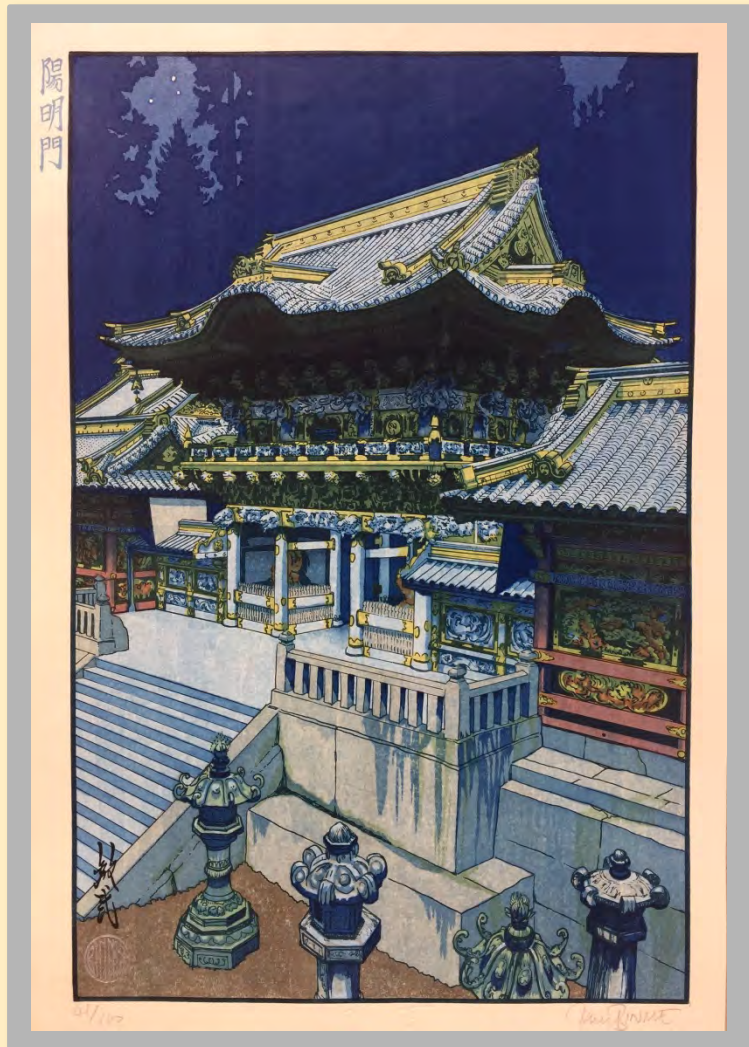


LANDSCAPES

(FROM 1997)



JAPANESE LANDSCAPES



YOSHIDA HIROSHI

(1876 – 1950)



MEISHŌ TO NO TABI SERIES



COMPARISON



MEISHŌ TO NO TABI SERIES



BIJIN-GA

(FROM 2003)



AZUMA NISHIKI BIJIN AWASE



HYAKUNEN NO HANA



COMMISSION: HŌ-Ō NO YUME



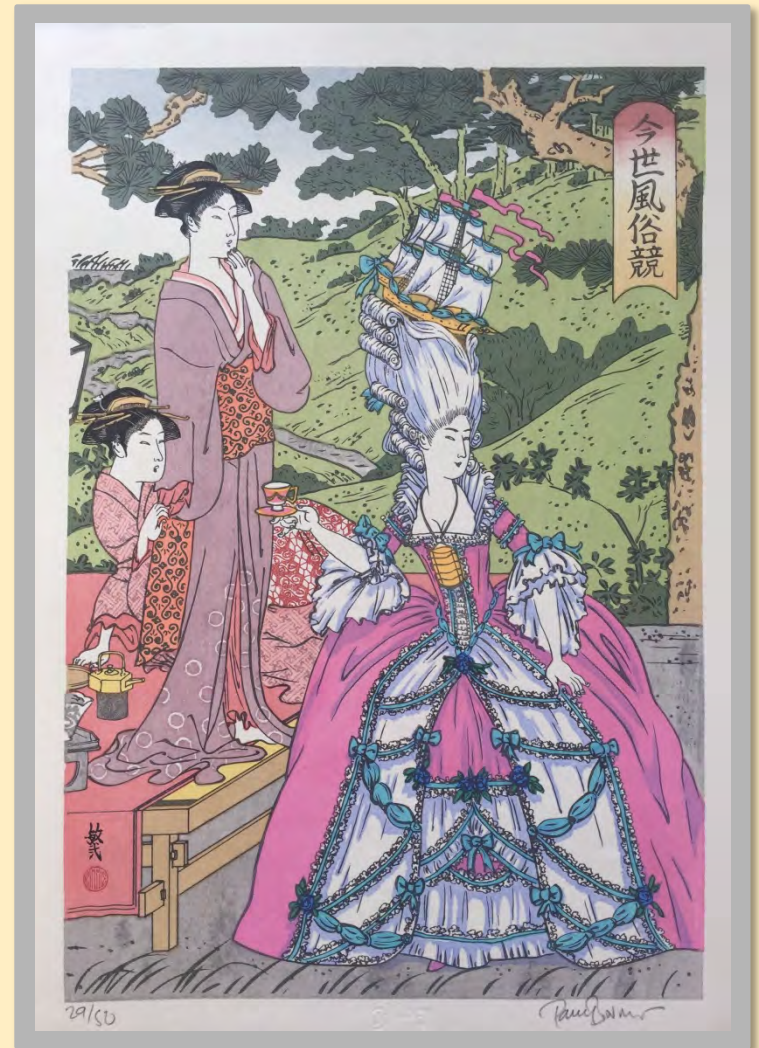
VARIATIONS ON A THEME



HONGA-DORI



JIGOKU-DAYU & INVENTED HISTORY



CRANES



